

Bowers & Wilkins  FORMATION

THE HIGHEST
FORM OF SOUND.

A NEW STANDARD IN WIRELESS AUDIO

THE HIGHEST FORM OF SOUND.

Bowers & Wilkins

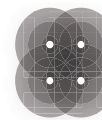
Company founder John Bowers defined the perfect loudspeaker as one able to deliver sound to the listener exactly as it was recorded, and that's what the Formation Suite does - wirelessly. Using the signature technologies found across the Bowers & Wilkins range all the way up to the flagship 800 Series Diamond, Formation is designed to deliver superlative sound and ultimate fidelity - whatever you choose to play and wherever you want to play it.



OUR UNIQUE MESH TECHNOLOGY

At the heart of Formation is Formation Wireless mesh technology, giving you a dedicated wireless network to link the speakers and your music. Unlike conventional wireless multiroom speaker systems, which use your existing home Wi-Fi - and are thus prone to poor quality streaming as a result of multiple devices using the same network - Formation Wireless mesh technology uses an entirely separate high-speed wireless network. This allows the transmission of music at up to 96kHz/24-bit quality with extraordinary precision, providing perfect synchronisation between all the Formation speakers.

This precision, giving in-room synchronisation of less than one microsecond, means all your Formation speakers will be perfectly in sync. In busy Wi-Fi environments, such as most modern homes, this robust mesh technology ensures uninterrupted listening even with multiple Formation 'zones', all under the control of a simple app. It's easy to set up and use, and simple to add extra speakers when required, or integrate Formation components with your existing hi-fi system.



Perfected Speaker Synchronisation

An industry-defining, completely immersive soundstage enabled by wireless sync between speakers with an accuracy below one microsecond.



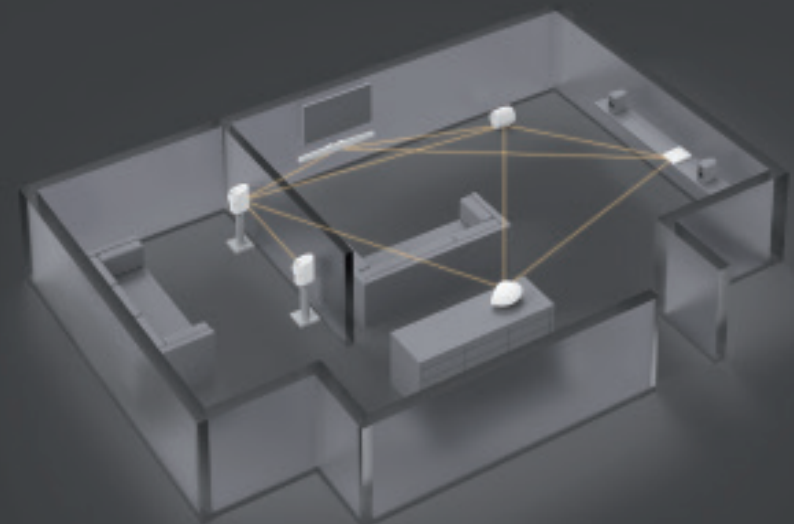
Patented Robust Mesh Network

Developed to run independently from your home Wi-Fi network to ensure high-resolution audio performance throughout your home.



High Fidelity Streaming

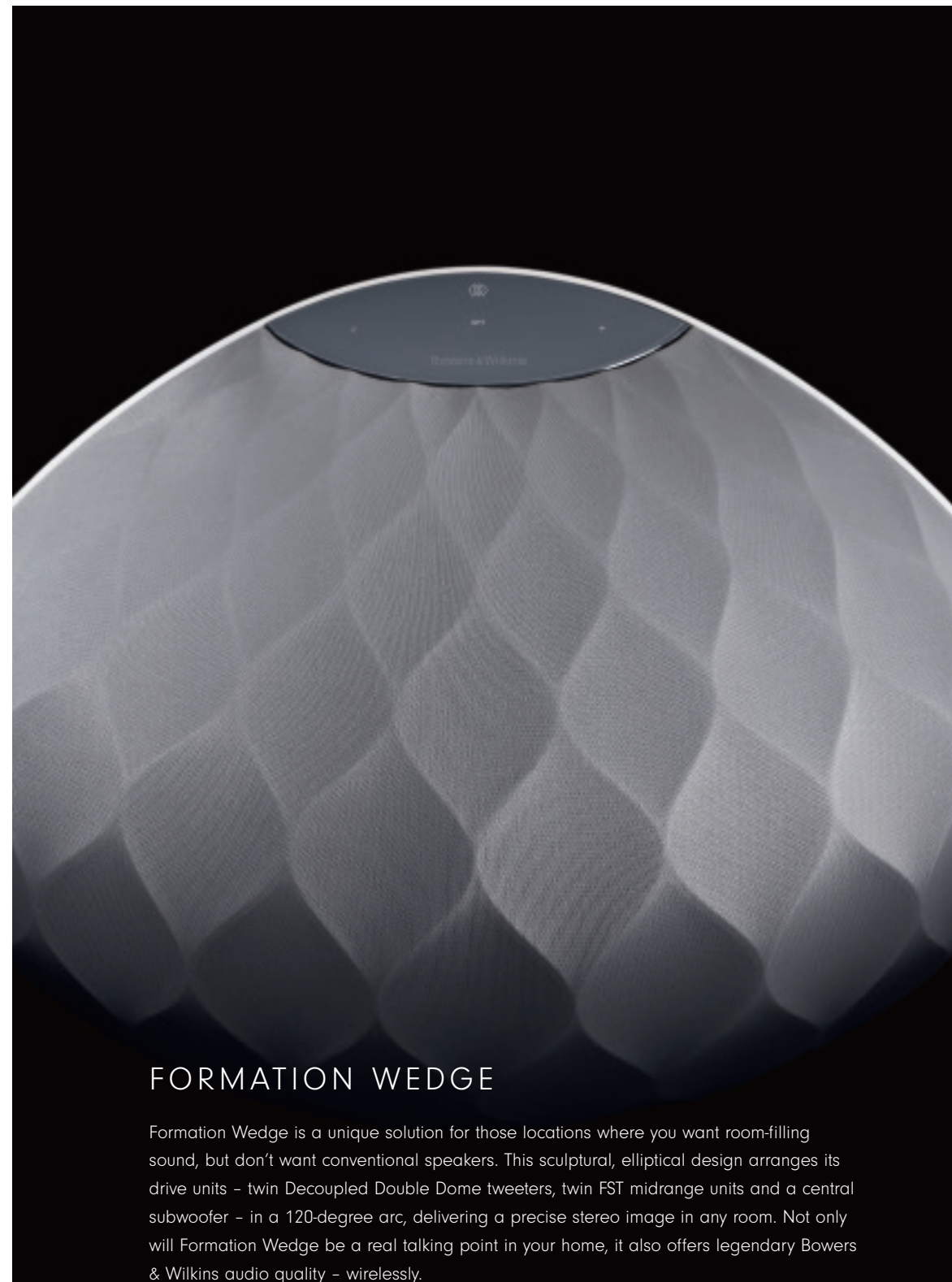
96kHz/24-bit streaming with more than twice the resolution of the leading wireless speaker brand, for the purest experience.





FORMATION DUO

Formation Duo is unmistakably a Bowers & Wilkins speaker design, combining the company's Carbon Dome tweeter, housed in a tweeter-on-top enclosure for the purest high frequencies, with the fast, accurate Continuum Cone mid/bass driver originally developed for the 800 Series Diamond range. Add powerful built-in amplification and Formation Wireless mesh technology and you have a distinctive stereo speaker system that brings you as close as possible to the music.



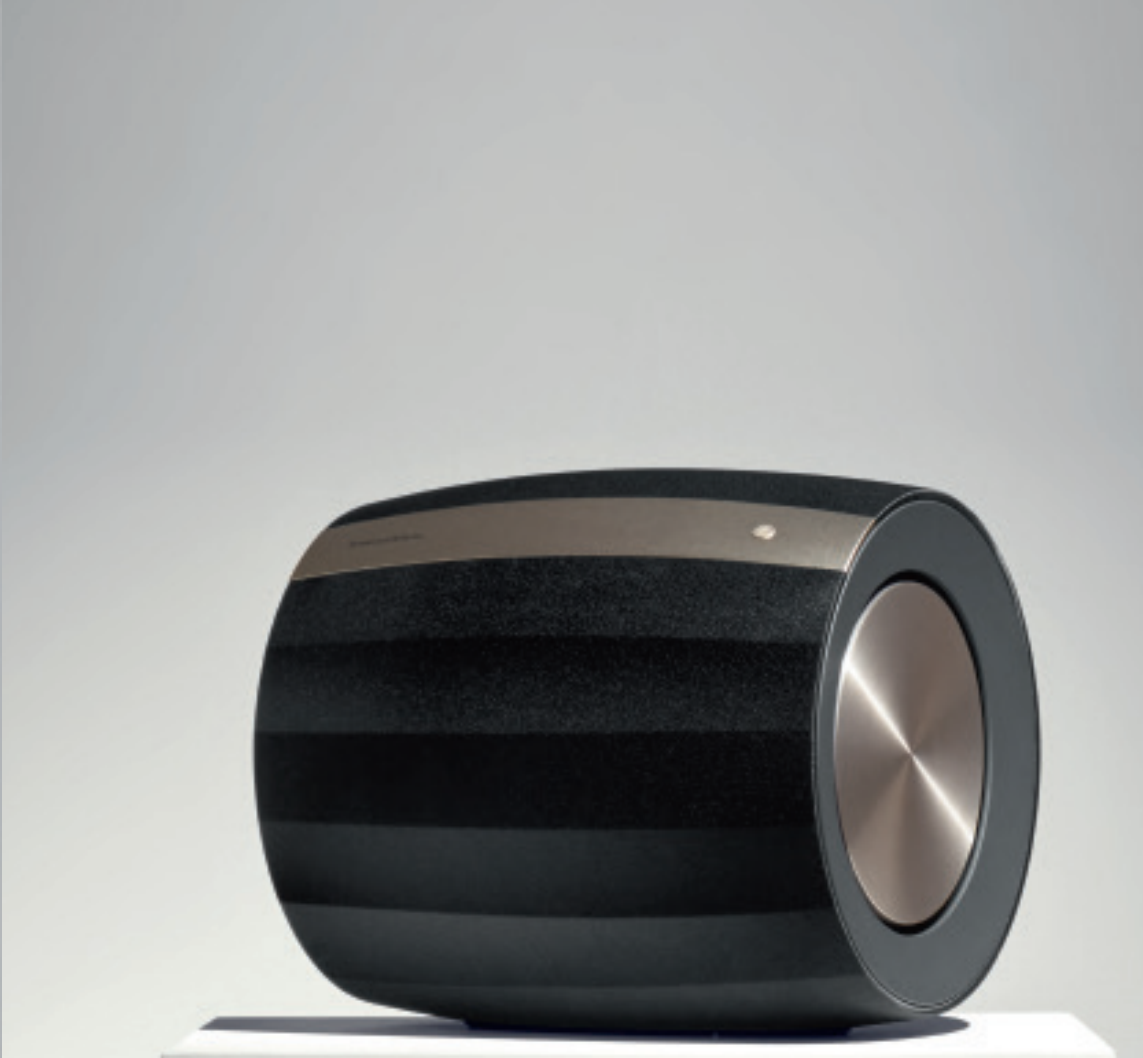
FORMATION WEDGE

Formation Wedge is a unique solution for those locations where you want room-filling sound, but don't want conventional speakers. This sculptural, elliptical design arranges its drive units – twin Decoupled Double Dome tweeters, twin FST midrange units and a central subwoofer – in a 120-degree arc, delivering a precise stereo image in any room. Not only will Formation Wedge be a real talking point in your home, it also offers legendary Bowers & Wilkins audio quality – wirelessly.



FORMATION BAR

The Formation Bar is the home cinema solution in the range, connecting to your TV via optical digital and using no fewer than nine drive units, with a dedicated centre channel to focus attention on the screen. Superb Bowers & Wilkins drive units, including the Decoupled Double Dome tweeter from the 600 Series, create a precise, immersive experience with your favourite sports, TV shows, games and movies. Of course, the Formation Bar can also stream music at up to 96kHz/24-bit hi-res quality over the Formation Wireless mesh network.



FORMATION BASS

Formation Bass is an innovative wireless subwoofer for both home cinema and music use, using powerful digital power amplification with dual-opposed drive units for minimal distortion. It's all under the control of DSP processing featuring Dynamic EQ, analysing its performance in real time for optimal sound quality. Couple this with its elegant cylindrical enclosure, designed for rigidity and reduced resonance, and you have a subwoofer able to play louder and harder without distortion, delivering clean bass you can really feel.

FORMATION AUDIO

Formation Audio features analogue and digital inputs so you can share your turntable, CD player or any other hi-fi components with any Formation speaker – or indeed all the Formation speakers in your home. Hook up your chosen component and whatever you're playing can be shared around the house – simply, wirelessly, and in high resolution.



FORMATION FLEX

Bowers & Wilkins continues to extend its new wireless capabilities with the introduction of the Formation Flex – the highest quality of sound ever from a compact standalone wireless speaker. The Formation Flex features the same tweeter technology found in our award-winning 600 Series speakers, for an amazingly clear sound. The versatile Formation Flex can be used independently; paired with another Formation Flex for stereo sound or used with any other Formation speakers for a whole-home audio system – including the Formation Bar and Bass for an immersive 5.1 surround sound experience. Formation Flex lives up to the exacting high-fidelity standards of Bowers & Wilkins while continuing to redefine wireless audio sound quality. It's true to our ground-breaking heritage and a key part of the Highest Form of Sound™.

Formation Audio is also the link between the Formation Wireless mesh network and the hi-fi you already own, with analogue and digital outputs to feed sound from your network to the inputs on any system, amplifier or receiver. With a simple one-cable hook-up, any existing hi-fi set-up can be fed with sound from your Formation network.



SPECIFICATIONS



FORMATION DUO

Description	Wireless High Performance Speaker System
Technical features	Apple® AirPlay 2® technology, Spotify® Connect, Roon Ready, Bluetooth In, Digital Signal Processing (DSP), Digital amplifier, Dynamic EQ
Drive units	1x ø25mm (1 in) Carbon Dome high-frequency 1x ø165mm (6.5 in) Continuum Cone bass midrange
Frequency response	25Hz to 33kHz
Amplifier power output	2 x 125W
Input voltage	100V - 240V - 50/60Hz
Power consumption	Below 6 Watts (Sleep)*
Connections	Network (RJ45 Ethernet/Wi-Fi), USB - service only
Bluetooth	Bluetooth® v4.1, Class 2, aptX HD, AAC, SBC
Dimensions	Height: 395mm (15.6 in), width: 197mm (7.8 in), depth: 305mm (12 in)
Weight	10.6kg (23.4 lb)
AirPlay 2 compatibility	iPhone, iPad, and iPod touch with iOS 11.4 or later, Apple TV, 4K or Apple TV (4th Generation) with tv OS 11.4 or later, Mac or PC with iTunes 12.8 or later

SPECIFICATIONS



FORMATION WEDGE

Description	Wireless Music System
Technical features	Apple® AirPlay 2® technology, Spotify® Connect, Roon Ready, Bluetooth In, Digital Signal Processing (DSP), Digital amplifier, Dynamic EQ
Drive units	2 x 25mm (1 in) Decoupled Double Dome tweeter 2 x 90 mm (3.5 in) FST midrange 1 x 150mm (6 in) subwoofer
Frequency response	35Hz to 28kHz
Amplifier power output	2 x 40W (tweeter) 2 x 40W (midrange) 1 x 80W (subwoofer)
Input voltage	100V - 240V - 50/60Hz
Power consumption	Below 6 Watts (Sleep)*
Connections	Network (RJ45 Ethernet/Wi-Fi), USB - service only
Bluetooth	Bluetooth® v4.1, Class 2, aptX HD, AAC, SBC
Dimensions	Height: 232mm (9.1 in), width: 440mm (17.3 in), depth: 243mm (9.6 in)
Weight	6.5kg (14.3 lb)
AirPlay 2 compatibility	iPhone, iPad, and iPod touch with iOS 11.4 or later, Apple TV, 4K or Apple TV (4th Generation) with tv OS 11.4 or later, Mac or PC with iTunes 12.8 or later

SPECIFICATIONS



FORMATION BAR

Description	Wireless Soundbar
Technical features	Apple® AirPlay 2® technology, Spotify® Connect, Roon Ready, Bluetooth In, Digital Signal Processing (DSP), Digital amplifier, Dynamic EQ
Drive units	3 x 25mm (1 in) Decoupled Double Dome tweeter 6 x 65 mm (2.6 in) woven glass fibre cone bass/midrange
Frequency response	40Hz to 28kHz
Amplifier power output	6x 40W
Input voltage	100V - 240V - 50/60Hz
Power consumption	Below 6 Watts (Sleep)*
Connections	Toslink Digital socket Network (RJ45 Ethernet/Wi-Fi), USB - service only
Bluetooth	Bluetooth® v4.1, Class 2, aptX HD, AAC, SBC
Dimensions	Height: 109mm (4.3 in), width: 1240mm (48.8 in), depth: 107mm (4.2 in)
Weight	5.5kg (12.1 lb)
AirPlay 2 compatibility	iPhone, iPad, and iPod touch with iOS 11.4 or later, Apple TV, 4K or Apple TV (4th Generation) with tv OS 11.4 or later, Mac or PC with iTunes 12.8 or later

SPECIFICATIONS



FORMATION BASS

Description	Wireless Subwoofer
Technical features	Digital Signal Processing (DSP), Digital amplifier, Dynamic EQ
Drive units	2 x 165mm (6.5 in) long throw bass unit
Frequency response	20Hz to 150Hz
Amplifier power output	250W
Input voltage	100V - 240V - 50/60Hz
Power consumption	Below 6 Watts (Sleep)*
Connections	(RJ45 Ethernet/Wi-Fi), USB - service only
Dimensions	Height: 254mm (10 in), width: 281mm (11.1 in), depth: 260mm (10.2 in)
Weight	12.5kg (27.6 lb)
AirPlay 2 compatibility	iPhone, iPad, and iPod touch with iOS 11.4 or later, Apple TV, 4K or Apple TV (4th Generation) with tv OS 11.4 or later, Mac or PC with iTunes 12.8 or later

* Formation products create a mesh network. Each product in this network dynamically chooses the optimal path to route audio-data between products, in order to ensure a robust streaming experience. We have therefore certified Formation products for High Network Availability (HiNA) and conform to the appropriate power requirements set out in the ERP directive.

SPECIFICATIONS



FORMATION AUDIO

Description	Wireless Audio Hub
Technical features	Apple® AirPlay 2® technology, Spotify® Connect, Roon Ready, Bluetooth In, High performance analogue-to-digital converter (ADC), High performance digital-to-analogue converter (DAC)
Input voltage	100V - 240V - 50/60Hz
Power consumption	Below 6 Watts (Sleep)*
Connections	2 x RCA analogue in/out and Toslink digital sockets Network (RJ45 Ethernet/Wi-Fi), USB - service only
Bluetooth	Bluetooth® v4.1, Class 2, aptX HD, AAC, SBC
Dimensions	Height: 44mm (1.7 in), width: 215mm (8.5 in), depth: 263mm (10.4 in)
Weight	1.0kg (2.2 lb)
AirPlay 2 compatibility	iPhone, iPad, and iPod touch with iOS 11.4 or later, Apple TV, 4K or Apple TV (4th Generation) with tv OS 11.4 or later, Mac or PC with iTunes 12.8 or later

SPECIFICATIONS

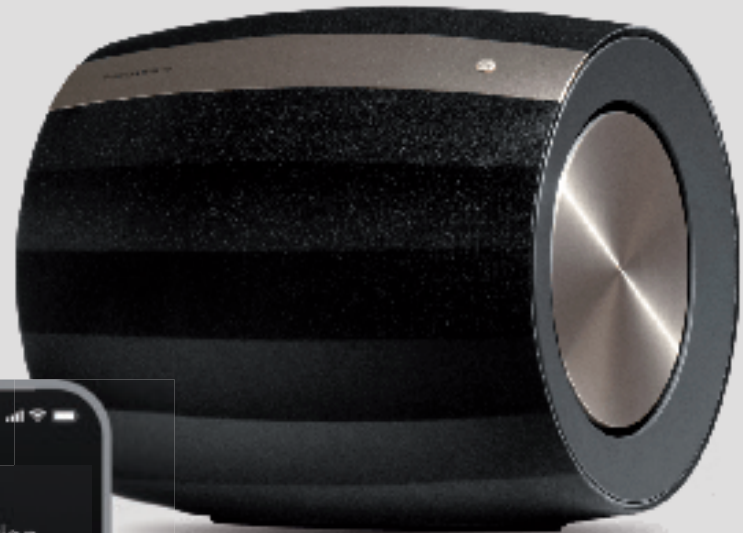
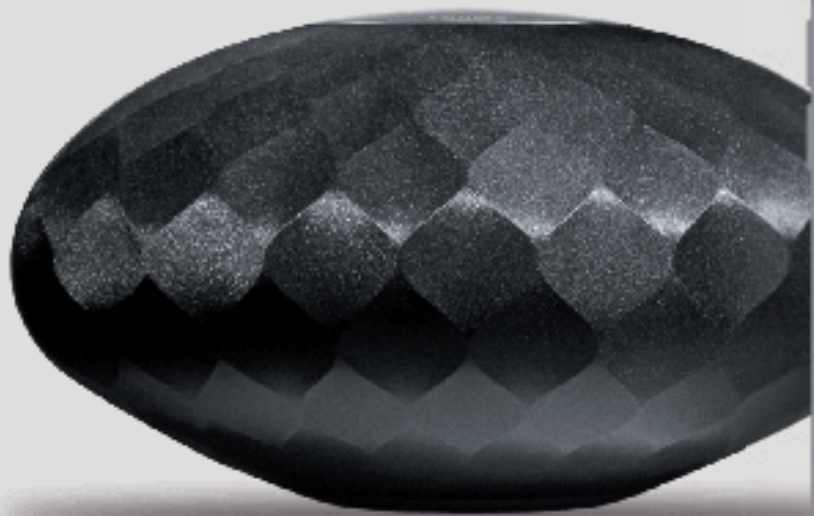


FORMATION FLEX

Description	Wireless Music Speaker
Technical features	Apple® AirPlay 2® technology, Spotify® Connect, Roon Ready, Bluetooth In, Digital Signal Processing (DSP), Digital amplifier, Dynamic EQ
Drive units	1 x ø25mm (1 in) Decoupled Double Dome tweeter 1x ø100mm (4 in) woven glass fibre cone bass/midrange
Frequency response	50Hz to 28kHz
Amplifier power output	1 x 50W (tweeter) 1 x 50W (bass/mid)
Input voltage	100V - 240V - 50/60Hz
Power consumption	Below 6 Watts (Sleep)*
Connections	(RJ45 Ethernet/Wi-Fi), USB - service only
Bluetooth	Bluetooth® v4.1, Class 2, aptX HD, AAC, SBC
Dimensions	Height: 215mm (8.5 in), width: 130mm (5.1 in), depth: 130mm (5.1 in)
Weight	2.3kg (5.1 lb)
AirPlay 2 compatibility	iPhone, iPad, and iPod touch with iOS 11.4 or later, Apple TV, 4K or Apple TV (4th Generation) with tv OS 11.4 or later, Mac or PC with iTunes 12.8 or later

QUICK & EASY SET-UP

The Bowers & Wilkins Home App makes it simple to set-up your first Formation® speaker: just choose which model you're using, tell the app in which room it will be located, and then connect it to the network. Adding more Formation® products is just as simple, with the app 'walking you through' the process, so you can quickly set up a whole-home high-resolution wireless audio system.



As well as streaming your own music stored on a computer or NAS drive on your network, Formation® offers a wide range of online streaming possibilities. You can play music directly from portable devices using AirPlay 2 or Bluetooth, use Formation to browse and play music from Spotify, or integrate a Formation® system with Roon, giving access to Tidal and Qobuz high-resolution music, along with a world of Internet radio content.



Compatible with:

